

GO!

GO! NETWORK
GROWTH AND OPPORTUNITIES FOR PROFESSIONALS

SLATE

(St. Louis Agency on Training & Employment)

Professionals In Transition

Michael K. Holmes, Executive Director

Mission

To develop a quality workforce that meets the economic and labor market needs of the region by providing leadership and promoting collaboration among public and private partners.

Vision

A vibrant regional economy in which everyone who wants a job has the skills needed to match available jobs and that every job has a qualified employee. The workforce system enables this vision through a series of high quality services that:

- Increase the skills of individuals
- Increase retention
- Increase employment
- Enhance the productivity and competitiveness of the region

Who Are We?

SLATE – St. Louis Agency on Training & Employment

- Department of the City of St. Louis
- Member, State of Missouri Career Center System
- Designated One-Stop Career Center
- Funded by the Workforce Investment Act (WIA)

What we do & for whom...

- WIA's mandate is **Work First**
- **Dislocated Workers** – Laid off or dislocated from the workforce
- **Adult Workers** – Individuals, 18 years of age & over

Services

- Career Counseling
 - Career Training
- Case Management
- Job leads & referrals

Do you have...

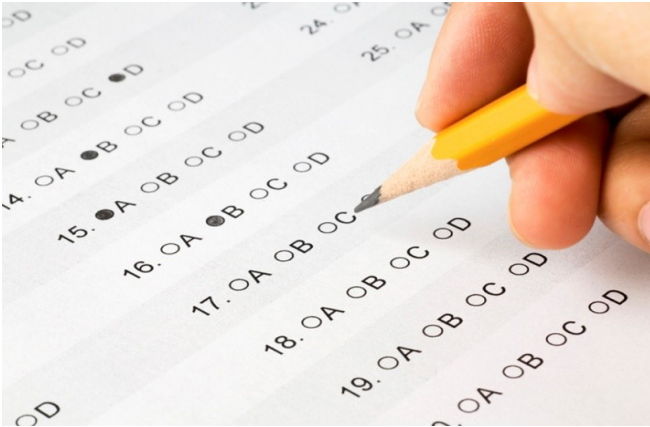
- A steady, stable industry-focused work history
- Academic or specialized credential(s)
- Desire to return to the workforce

Orientation

- **Tuesdays following GO! Network**
- **Downtown – 1017 Olive Street**
 - Mondays @ 1:30 p.m.
 - Wednesdays @ 9:00 a.m.

Bring Social Security card, current driver's license & layoff letter.

Training Requirements



- **Attend orientation**
- **Determine if there is a need for training**
- **Successfully complete skills assessments**
- **Determine eligibility of client, program and school**



Training Requirements Continued

- Complete training paperwork
- Refer to training vendor
- Verify you started classes
- Release of DESE 6 to cover cost of training

SLATE's Training Expectations

- Programs and curricula are relevant to current employment trends
- Receive Monthly Progress Reports
- Notify SLATE of any changes of status or information
- Notify SLATE of any problems/issues
- Send training completion documentation , i.e. copy of certificate, license or credential received as a result of training
- Provide placement services
- Notify SLATE of placement information

Contact Information

Call Tameka
(314) 552-7635

e-mail
professionalintransition@stlworks.com

Questions?

The logo consists of three overlapping squares: a yellow one in the top-left, a red one in the bottom-left, and a blue one in the bottom-right. A black crosshair is centered over the intersection of the squares.

Microsoft Elevate America

Lisa K. Johnson

MO Division of Workforce Development

Email: lisa.johnson@ded.mo.gov

7/9/09

What is Elevate America?



Microsoft is providing 1 million vouchers to states for no-cost access

- 
- Microsoft E-Learning courses
 - Select Microsoft Certification exams
-

Click to edit Master subtitle style



Expanded access to basic technology literacy and skills training

Basic-level information-technology training resources through Microsoft Unlimited Potential and Digital Literacy curricula



Intermediate technology- skills training courses, plus selected certification exams

- Vouchers for e-learning course collections offered by Microsoft
- Vouchers for certification exams leading to Microsoft Business Certification



**Discounted membership
rates for Microsoft IT
Academy program
participating institutions**


7/9/09



**Access to a Web site guides
individuals to training and
resources**

**Governments can choose to
make additional Microsoft
training and certifications
available**

7/9/09



Elevate America enhances the range of resources available to people who are looking to develop or enhance their current skills to meet the demands of the current job market or to pursue economic opportunities as entrepreneurs.

7/9/09



What is a "voucher"?

- A code that is provided by Microsoft through government-designated agencies
- Enables you to access training resources and certification exams for no cost
- Used to activate a "Learning Plan" and Microsoft certifications



Who is eligible to participate in Elevate America?

Everyone.

Whether you're currently employed and simply looking to brush up on your technology skills or are in the market for a career, Elevate America can help.

7/9/09



Where will Elevate America be available?

- MO Division of Workforce Development
- Complete training and/or certification at a number of locations
- Elevate America Web site highlights resources individuals can take advantage of today

What types of training are being offered?



- Basic digital literacy
 - offered as self-paced training for individuals or through community partners
- Information Worker resources aligned with Microsoft Business
 - Windows XP and Microsoft Office 2003
 - Microsoft Certified Application Specialist (Windows Vista and Microsoft Office 2007) certification

What types of training are being offered?



- IT-professional e-learning course resources aligned with Microsoft Certified Professional certification through Career Assist
 - Discounted learning package currently available to Second Shot registrants
- Student and educator resources
 - prepare students for successful careers, through the Career Forward offering, which includes career roadmaps and learning plans
- Discounted membership fees to IT Academy participating institutions
 - expand the capacity to provide in-classroom IT training

7/9/09



What credentials and certifications are offered?

- Elevate America will offer everything from certificates of completion for the basic IT training courses (basic Web navigation, etc.) to more-formal Microsoft business certifications (Office Outlook, Office Excel, Office Access).
- These credentials will be offered at low cost and no cost.



Can individuals sign up, or do they need to wait for their state to join?

- Individuals can access low-cost and no-cost training resources immediately through the Elevate America Web site.
- Microsoft is working with governments to offer a broader range of tools through Elevate America.